



2024

VOTER GUIDE

PALM BEACH COUNTY ★ FLORIDA

A MESSAGE FROM
PALM BEACH COUNTY SUPERVISOR OF ELECTIONS

WENDY SARTORY LINK



Dear Voter,

Voting brings us together as citizens and gives us a voice.

It is my honor to be your Supervisor of Elections and oversee elections in Palm Beach County.

We do our work with transparency, integrity, and security, ensuring that our elections are accessible, fair, efficient, and that our election results are tabulated quickly and accurately.

Our office will oversee the 2024 Uniform Municipal Elections and Presidential Preference Primary (PPP) on March 19th, the August 20th Primary Election, and the November 5th General Election. Please review this voter guide for important dates and deadlines regarding the elections.

Every voice matters. We encourage all eligible Palm Beach County voters to take this opportunity to make an election plan and be ready to vote.

We hope you find this Voter Guide helpful. Please also visit our website where you will always find the most current information about voting and elections.

Sincerely,

Wendy

Wendy Sartory Link
Palm Beach County Supervisor of Elections

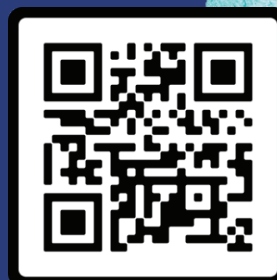


TABLE OF CONTENTS

2024 Offices up for Election	2
3 Ways to Vote.....	3
2024 Election Dates & Deadlines	4
2024 Election Calendar	5
Municipal Election Overview	6
Presidential Preference Primary (PPP) Election Overview	6
Primary Election Overview	7
General Election Overview	7
Register to Vote	8
Voter Rights & Responsibilities	9
Update Your Voter Information	10
Your Signature is Important.....	10
Get Ready to Vote.....	11
Voter Identification	12
Election Integrity.....	13
Vote-By-Mail.....	14
Voting in Person: Early Voting	18
Voting in Person: Election Day	19
How to Vote	20
Provisional Ballots	21
Voting Equipment.....	21
Frequently Asked Questions	22
Be an Election Worker	24
Adopt-a-Precinct.....	24
Elections Team Outreach.....	25
Voter Information is Public Record.....	26
Contact Information	27

2024 OFFICES UP FOR ELECTION & RETENTION

President of the United States

U.S. Senator

U.S. Representatives



State Senators (Odd-Numbered Districts)

State Representatives (All Districts)

State Attorney

Public Defender



Constitutional Offices

County Commissioners

School Board Members

Special District Offices

Port Commissioners

Special District Trustees



Supreme Court Justices (Retention)

District Courts of Appeal Judges (Retention)

Circuit Court Judges

County Court Judges

Municipalities (with an Election)

In addition, a ballot may also include proposed amendments to Florida's Constitution and county, municipal, and district referenda or other public measures.

3 WAYS TO VOTE



1 Vote-By-Mail

Carefully mark your ballot from home at the time most convenient for you, then mail it in or drop it off at one of our secure locations. Return postage is prepaid. If returning your ballot by mail, we recommend that you allow at least 5-7 business days for your ballot to be received by our office. Vote-by-Mail ballots must be received by our Main Office by 7:00 p.m. on Election Day. Requests for a mailed ballot must be received by 5:00 p.m. the 12th day before Election Day.



2 Early Voting

Eligible voters may cast their vote in person or drop their Vote-by-Mail ballot off at any Early Voting location during Early Voting hours. The number of days and locations vary by election and are subject to change. Check our website for the most current information including a list of locations, acceptable forms of ID, directions, and wait times or to make an appointment during Early Voting.



3 Election Day

Polls are open from 7:00 a.m. until 7:00 p.m. Voters must vote at their precinct's assigned polling location on Election Day. Polling locations will not accept Vote-by-Mail ballots on Election Day. Vote-by-Mail ballots must be returned to our Main Office by 7:00 p.m. on Election Day, or to a Branch office by 5:00 p.m. on Election Day.

Did you know?

In Florida, all voting is by paper ballot.



2024 ELECTION DATES & DEADLINES

Uniform Municipal Elections & Presidential Preference Primary

FEBRUARY 20, 2024 **REGISTRATION DEADLINE**

Last day to register to vote or change party affiliation.

MARCH 7, 2024, at 5:00 p.m. **VOTE-BY-MAIL BALLOT REQUEST DEADLINE**

The last day to request that a Vote-by-Mail ballot be mailed to you is 5:00 p.m. on the 12th day before Election Day.

MARCH 9 - 17, 2024 ★ 7:00 a.m. - 7:00 p.m. **EARLY VOTING**

Vote at any Early Voting location during voting hours. Visit VotePalmBeach.gov for locations and wait times, or to make an appointment.

MARCH 19, 2024 ★ 7:00 a.m. - 7:00 p.m. **ELECTION DAY**

Last day to vote in person and the deadline for Vote-by-Mail ballots to be in our Main Office by 7:00 p.m. On Election Day, you must vote at your assigned polling place.

Primary Election

JULY 22, 2024 **REGISTRATION DEADLINE**

Last day to register to vote or change party affiliation.

AUGUST 8, 2024, at 5:00 p.m. **VOTE-BY-MAIL BALLOT REQUEST DEADLINE**

The last day to request that a Vote-by-Mail ballot be mailed to you is 5:00 p.m. on the 12th day before Election Day.

AUGUST 10 - 18, 2024 ★ 7:00 a.m. - 7:00 p.m. **EARLY VOTING**

Vote at any Early Voting location during voting hours. Visit VotePalmBeach.gov for locations and wait times, or to make an appointment.

AUGUST 20, 2024 ★ 7:00 a.m. - 7:00 p.m. **ELECTION DAY**

Last day to vote in person and the deadline for Vote-by-Mail ballots to be in our Main Office by 7:00 p.m. On Election Day, you must vote at your assigned polling place.

General Election

OCTOBER 7, 2024 **REGISTRATION DEADLINE**

Last day to register to vote.

OCTOBER 24, 2024, at 5:00 p.m. **VOTE-BY-MAIL BALLOT REQUEST DEADLINE**

The last day to request that a Vote-by-Mail ballot be mailed to you is 5:00 p.m. on the 12th day before Election Day.

OCTOBER 21 - NOVEMBER 3, 2024 **7:00 a.m. - 7:00 p.m.**

EARLY VOTING

Vote at any Early Voting location during voting hours. Visit VotePalmBeach.gov for locations and wait times, or to make an appointment.

NOVEMBER 5, 2024 ★ 7:00 a.m. - 7:00 p.m. **ELECTION DAY**

Last day to vote in person and the deadline for Vote-by-Mail ballots to be in our Main Office by 7:00 p.m. On Election Day, you must vote at your assigned polling place.

* Vote-by-Mail ballots must be received by the Main Office of the Palm Beach County Supervisor of Elections by 7:00 p.m. on Election Day. More information about returning your Vote-by-Mail ballot can be found on page 14.

2024 ELECTION CALENDAR

FEBRUARY 2024

Sunday	Monday	Tuesday	Wednesday	Thursday	Friday	Saturday
				1	2	3
4	5	6	7	8	9	10
11	12	13	14	15	16	17
18	19	20	21	22	23	24
25	26	27	28	29		

MARCH 2024

Sunday	Monday	Tuesday	Wednesday	Thursday	Friday	Saturday
					1	2
3	4	5	6	7	8	9
10	11	12	13	14	15	16
17	18	19	20	21	22	23
24	25	26	27	28	29	30
31						

JULY 2024

Sunday	Monday	Tuesday	Wednesday	Thursday	Friday	Saturday
	1	2	3	4	5	6
7	8	9	10	11	12	13
14	15	16	17	18	19	20
21	22	23	24	25	26	27
28	29	30	31			

AUGUST 2024

Sunday	Monday	Tuesday	Wednesday	Thursday	Friday	Saturday
				1	2	3
4	5	6	7	8	9	10
11	12	13	14	15	16	17
18	19	20	21	22	23	24
25	26	27	28	29	30	31

OCTOBER 2024

Sunday	Monday	Tuesday	Wednesday	Thursday	Friday	Saturday
		1	2	3	4	5
6	7	8	9	10	11	12
13	14	15	16	17	18	19
20	21	22	23	24	25	26
27	28	29	30	31		

NOVEMBER 2024

Sunday	Monday	Tuesday	Wednesday	Thursday	Friday	Saturday
					1	2
3	4	5	6	7	8	9
10	11	12	13	14	15	16
17	18	19	20	21	22	23
24	25	26	27	28	29	30

- REGISTRATION DEADLINE
- EARLY VOTING DATES
- ELECTION DAY

- POLITICAL PARTY CHANGE DEADLINE
- VOTE-BY-MAIL BALLOT REQUEST DEADLINE

WHAT IS A MUNICIPAL ELECTION?

Municipalities have governing bodies whereby the members are elected by the voters living within the municipality. Each of the 39 municipalities in Palm Beach County has a charter that stipulates the term of the office and the frequency of the elections. The Municipal Election is run by the municipality, therefore, each has its own qualifying dates and rules, pursuant to its charter and ordinances. A municipality may have a provision in its charter that necessitates a Run-Off election. All voters eligible to vote within the municipality may vote in the Municipal Run-Off Election.

Voters living within the boundaries of the municipality are eligible to participate in the election for that municipality. Voters living in unincorporated Palm Beach County are not eligible to participate in municipal elections. Voters can find their municipality on their voter registration information card or by calling our office at (561) 656-6200.

WHAT IS A PRESIDENTIAL PREFERENCE PRIMARY (PPP) ELECTION?

The Presidential Preference Primary (PPP) Election is part of the presidential nominating process for Florida's two major political parties. Voters registered with the Democratic Party or Republican Party express their preference for the presidential candidate they would like to see representing their party on the General Election ballot in November.

After the PPP, designated political party delegates from Florida formally nominate the preferred presidential candidate at the respective party's national convention. These national conventions are typically held in July or August. Based on the party rules governing delegate voting procedures, the party decides at the convention which presidential candidate will represent the party on the General Election ballot.

WHAT IS A PRIMARY ELECTION?

A Primary Election is used by political parties to nominate a candidate to move on to the General Election. Florida has closed primaries, meaning a voter must be registered with a political party to vote in that party's primary races.

If all candidates in a race have the same party affiliation and the winner will be unopposed in the General Election, anyone may vote in the primary for that race, regardless of party affiliation. This is known as a Universal Primary Contest. The primary is also used to narrow down the number of candidates in nonpartisan races (such as school board) and may include some amendments or referenda. All voters, whether affiliated with a political party or not, vote on nonpartisan races and issues in the Primary Election.

WHAT IS A GENERAL ELECTION?

A General Election is where the final decision on office holders is made. Voters choose from candidates with no party affiliation and candidates nominated by parties. During the General Election, you can vote in any race, regardless of party affiliation.

Before each election, watch for your personalized sample ballot to arrive by mail or email, or look it up at VotePalmBeach.gov. If you have requested a Vote-by-Mail ballot, you will receive that in the mail in lieu of your sample ballot.

REGISTER TO VOTE IN PALM BEACH COUNTY

TO REGISTER AND VOTE IN PALM BEACH COUNTY, YOU MUST BE:

- ▶ A citizen of the United States of America,
- ▶ A resident of Palm Beach County, Florida, and
- ▶ At least 18 years old*.

** You may pre-register on or after your 16th birthday. You may vote in any election held on or after your 18th birthday.*

YOU CANNOT REGISTER OR VOTE IF YOU ARE:

- ▶ Currently adjudicated mentally incapacitated with respect to voting; or
- ▶ A convicted felon whose voting rights have not been restored; or
- ▶ Not a citizen of the United States of America (a lawful permanent resident cannot register or vote in Florida).

If you are registered to vote in another state, make sure to cancel your previous registration.

HOW TO REGISTER:



Online... Registering online is a convenient option for Florida voters! If you have a Florida driver license or Florida ID, and the last four digits of your Social Security Number you can visit RegisterToVoteFlorida.gov to register online.



On Paper... Voter Registration Applications can be downloaded from VotePalmBeach.gov and are provided at voter registration agencies throughout the county. It only takes a few minutes to fill one out and mail or deliver it to our office, the Division of Elections, or any voter registration agency.

VOTER REGISTRATION AGENCIES:

- ▶ Supervisor of Elections offices
- ▶ Florida driver license offices in person or online
- ▶ A tax collector's office that issues driver licenses or Florida ID cards
- ▶ Public assistance offices
- ▶ Public libraries
- ▶ Offices that serve people with disabilities
- ▶ Armed forces recruitment offices
- ▶ Centers for independent living
- ▶ Any entity authorized by the Florida Fish and Wildlife Conservation Commission to issue fishing, hunting, or trapping permits.

Don't wait!

If you are not already registered, you must register at least 29 days before an election to vote in that election.

VOTER RIGHTS AND RESPONSIBILITIES

EACH REGISTERED VOTER IN FLORIDA HAS THE RIGHT TO:

- ▶ Vote and have their vote accurately counted.
- ▶ Cast a vote if they are in line at the official closing of the polls.
- ▶ Ask for and receive assistance in voting.
- ▶ Receive up to two replacement ballots if they make a mistake prior to the ballot being cast.
- ▶ An explanation if their registration or identity is in question.
- ▶ Cast a provisional ballot if their registration or identity is in question.
- ▶ Written instructions to use when voting and, upon request, oral instructions in voting from elections officers.
- ▶ Vote free from coercion or intimidation by elections officers or any other person.
- ▶ Vote on a voting system that is in working condition and that will allow votes to be accurately cast.

EACH REGISTERED VOTER IN FLORIDA SHOULD:

- ▶ Familiarize themselves with the candidates and issues.
- ▶ Maintain a current address with the office of the Supervisor of Elections.
- ▶ Know the location of their polling place and its hours of operation.
- ▶ Bring proper identification to the polling station.
- ▶ Familiarize themselves with the operation of the voting equipment in their precinct.
- ▶ Treat precinct workers with courtesy.
- ▶ Respect the privacy of other voters.
- ▶ Report any problems or violations of election laws to the Supervisor of Elections.
- ▶ Ask questions, if needed.
- ▶ Make sure that their completed ballot is correct before leaving the polling station.

** Failure to perform any of these responsibilities does not prohibit a voter from voting.*

UPDATE YOUR VOTER INFORMATION

Once you have registered to vote in Florida, you do not have to register again, but you do need to keep your information up to date. You can change or update your voter information at any time, but a political party change for a Primary Election must be made no later than 29 days before that election.

Use a printed or online Voter Registration Application Form to update your address, name, political party, signature, and to request a replacement voter information card. You can return the completed application by mail to P.O. Box 22309, West Palm Beach, FL 33416, or at any of our four offices during office hours.

Our office may send you a notice asking you to confirm your address. When we receive information from the post office or another governmental agency source that you have moved, we will send you a notice to confirm the address change. If the information shows that you may no longer live in the state, the Supervisor of Elections will send you a follow-up address confirmation final notice. If the notice comes back undeliverable or you do not respond within 30 days, your registration status will be changed from active to inactive. As an inactive voter, you are still registered and can vote. Your inactive status goes back to active status if you update your voter registration record, go to the polls to vote, or request a Vote-by-Mail ballot. However, if you do not take any of these actions after two general (federal) elections from the date you were first made inactive, your name will be removed from the registration system. You will then have to re-register to vote in Florida.

YOUR SIGNATURE IS IMPORTANT

Your handwriting may change over time, so it's important to update your signature periodically. We use the signatures on file to verify your identity on petitions, provisional ballots, and Vote-by-Mail ballots.

You may use a paper voter registration application or an online application to update your signature. If you use the online voter registration application, the most recent signature from your Florida driver license or Florida ID card will be added to your voter record.



GET READY TO VOTE

After you register to vote or update your information, you will receive a Voter Information Card. The card tells you the districts you live in, your precinct and Election Day Polling Location.

UNDERSTANDING YOUR BALLOT

- ▶ Some of the elected officials we vote for represent the entire county, while others represent a specific district or section of the county.
- ▶ Your Primary Election ballot includes races and issues based on your party affiliation and the districts you live in.
- ▶ Your General Election ballot is based only on the districts you live in.

Wendy Sartory Link, Supervisor of Elections VOTER INFORMATION CARD PALM BEACH COUNTY, FL		
TARJETA DE INFORMACION ELECTORAL CONDADO DE PALM BEACH, FL		
Registration Number Número de Inscripción	Registration Date Fecha de Inscripción	Precinct Distrito Electoral
Voter Name / Address Nombre / Domicilio		Political Party Partido Político
Your Precinct Number Su Número de Recinto		
Your Polling Location Su Centro Electoral		
Visit VotePalmBeach.gov for current polling place. Visite VotePalmBeach.gov para conocer su actual centro de votación.		
You are eligible to vote for a representative in each district listed. Usted es elegible para votar por un representante en cada distrito listado.		
U.S. Congress Congreso de los EE.UU.	State Senate Senado del Estado	State House Cámara de Diputados del Estado
County Commission Comisión del Condado	School Board Junta Escolar	Municipality Municipalidad
Signature /Firma _____		

This card is for information purposes only. This card is proof of registration but is not legal verification of eligibility to vote. It is the responsibility of a voter to keep his or her eligibility status current. A voter may confirm his or her eligibility to vote with the Department of State.

MARKING YOUR BALLOT

- Read the voting instructions at the top of your ballot.
- Use a black pen to carefully fill in the ovals next to your choices.
- If you vote in person during Early Voting or on Election Day, you are welcome to bring and use your own black ballpoint pen.
- Remember that your ballot may be two-sided and have more than one page.
- If you vote for too many candidates in a race, your votes in that race will not be counted.
- It is okay to skip races.
- If you make a mistake, ask for a new ballot.

VOTER IDENTIFICATION

You need to bring a picture/signature ID to vote a regular ballot at an Early Voting site or your Election Day polling place. You can use any combination of the following IDs that show your picture and signature:

- ▶ Florida driver license or Florida identification card issued by the Department of Highway Safety and Motor Vehicles
- ▶ U.S. Passport
- ▶ Debit or Credit Card
- ▶ Military ID
- ▶ Student ID
- ▶ Retirement Center ID
- ▶ Neighborhood Association ID
- ▶ Public Assistance ID
- ▶ Veteran Health ID issued by the United States Department of Veterans Affairs
- ▶ Concealed Weapon / Firearm License issued pursuant to 790.06, F.S.
- ▶ Employee ID issued by any branch, department, agency, or entity of the Federal Government, the State, a county or a municipality

Your Voter Information Card does not count as ID to vote. If you forget to bring ID with you, you can vote using a provisional ballot.



ELECTION INTEGRITY

WE ARE COMMITTED TO CONDUCTING TRANSPARENT AND SECURE ELECTIONS.

That is why we conduct a logic and accuracy test before each election, and an audit after each election. We double-check every vote to ensure that the election results are accurate. Our systems are certified by the Florida Department of State, and all voting in Florida is done using a paper ballot.

There are layers of security and procedures that maintain the integrity of our elections. We conduct maintenance on the voter registration list every year to ensure that only eligible voters are registered.

Voting-by-Mail has similar safeguards. We only mail out ballots when a voter has requested one and provided identifying data. When we receive the ballot back, we do not remove it from the envelope until after we have confirmed that it was returned by the voter through signature verification. Poll watchers can observe in-person voting. We only open and count Vote-by-Mail ballots during public meetings.

Nearly every record related to the election is a public record open to inspection. Our elections are secure, and the results can be trusted.



VOTING BY MAIL

Any registered voter may request a Vote-by-Mail ballot. Unlike some other states, you do not need an excuse to request that a Vote-by-Mail ballot be mailed to you. When requested, we mail your ballot to you wherever you will be, and you can take your time making your voting decisions.

We begin mailing Vote-by-Mail ballots to Military and Overseas voters 45 days before Election Day. Over a month before Election Day, we begin mailing ballots to stateside voters who requested a Vote-by-Mail ballot. After that, we fulfill requests within 48 hours of receiving them. The deadline to request that a ballot be mailed to you is 5 p.m. on the 12th day before Election Day.

After you request your ballot, track it at VotePalmBeach.gov. You will see when we send it out, when we receive it back from you, and when it is counted on Election Day.

IMPORTANT: Vote-by-Mail ballot requests expire after each General Election. If you already enjoy voting by mail and wish to continue voting by mail in any 2025 - 2026 elections, you must submit a new Vote-by-Mail ballot request **after** the November 5, 2024 General Election.

Requesting YOUR Ballot

You can find the online request form on our website at VotePalmBeach.gov, call (561) 656-6200, stop by our office, or submit a written request. You'll need to provide your:

- ▶ Name and address
- ▶ Date of birth
- ▶ Mailing address, if different from home address
- ▶ Florida driver license or identification card number or the last four digits of Social Security Number (whichever may be verified in your voter records)
- ▶ Signature (for written requests)
- ▶ Your request must be in writing if you want your ballot to go to an address that is not already on file, unless you are an overseas or absent uniformed service voter

Requesting a ballot for SOMEONE ELSE

An immediate family member or legal guardian may request a ballot for someone else. In addition to the voter information above, the requester must also provide their:

- ▶ Name and address
- ▶ Driver license number, identification card number or last four digits of Social Security Number (if available)
- ▶ Relationship to the voter
- ▶ Signature (for written requests)



IMPORTANT TO KNOW: You may cancel your request at any time. If you make a mistake on your ballot, contact our office and request a replacement ballot.



VOTING BY MAIL

Picking Up A Ballot

You may pick up your Vote-by-Mail ballot at any time after the ballots are mailed and through 7:00 p.m. on Election Day. During the mandatory Early Voting period and on Election Day, the voter or their designee must execute an affidavit affirming that the voter is unable to go to an Early Voting location or to their polling place on Election Day. A designee must:

- ▶ have written authorization from you;
- ▶ present a picture ID; and
- ▶ sign a declaration.

If you do not have a Vote-by-Mail ballot request already on file, a written request must accompany the affidavit.

Returning Your Ballot

Your Vote-by-Mail ballot arrives with instructions, a ballot, a secrecy sleeve, an 'I Voted' sticker, and a postage-paid return envelope. After you've filled out your ballot, follow these simple steps:

- ▶ Put your marked ballot in secrecy sleeve.
- ▶ Put the secrecy sleeve in the return envelope.
- ▶ Seal, sign, and date the back of the return envelope.
- ▶ **MAIL YOUR BALLOT BACK** – we've prepaid the postage – or return it to one of our offices or an Early Voting site during Early Voting hours.
- ▶ **VOTERS MAY DROP OFF THEIR BALLOT TO ONE OF OUR SECURE BALLOT INTAKE STATIONS** (formerly known as Drop Boxes) during their hours of operation.

*The hours and locations will be listed on our website prior to each election. Every day, we empty the stations and securely transfer the ballots to our office or the Voting Equipment Center for processing. Each station is staffed by election workers to make sure that your ballot is safe. Please remember to sign your name in the signature box on the outer envelope and seal it before returning your ballot. Vote-by-Mail ballots are not accepted at polling locations on Election Day; however, the election worker at **your** precinct's polling location can cancel your mail ballot and you may then vote in person.*

Your mail ballot **MUST** be received by our office (not postmarked) no later than 7:00 p.m. on Election Day*. If you need to return your ballot on Election Day, our Branch Offices will be open until 5:00 p.m. and our Main Office will be open until 7:00 p.m.

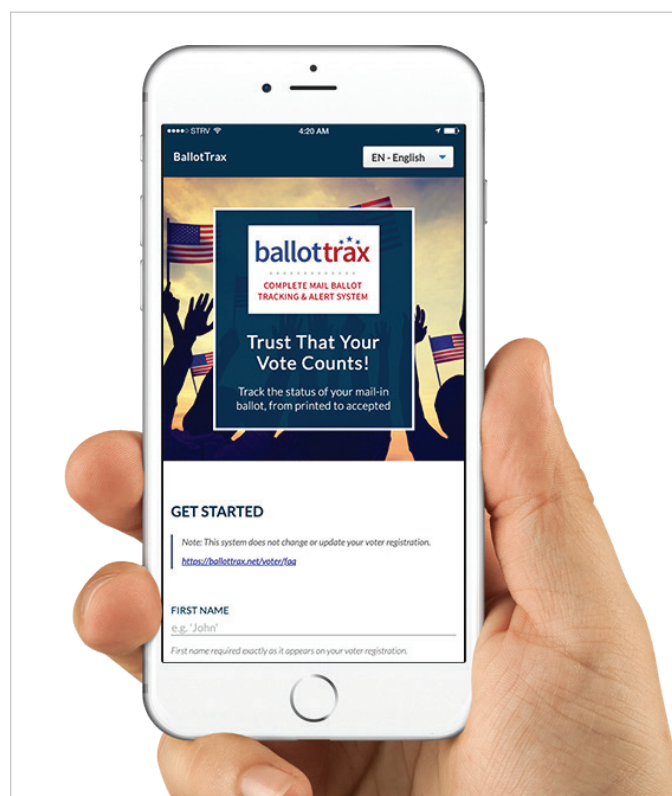
** A 10-day extension exists only for overseas voters for the Presidential Preference Primary and General Election only. You may not drop off your mail ballot at a polling place on Election Day. If you requested and received a Vote-by-Mail ballot but prefer to vote in person, check in with a poll worker, cancel your mail ballot and receive an Election Day ballot.*

Tracking Your Ballot

Opt-in to get an alert via email, text (SMS), and/or voice messages when your ballot has been mailed out, received by our office, or if there is an issue with your ballot so that it can be corrected right away.

Learn more and sign up at

VotePalmBeach.gov/Voters/BallotTrax.



What Happens Next?

1. We verify your signature* and update your voter record to show that you have voted.
2. We securely store your ballot until it's ready to be counted.
3. We separate the envelope from the secrecy sleeve that contains your ballot, and then separate the ballot from the secrecy sleeve, so that your ballot remains secret.
4. We tabulate your ballot and scan it through our ClearBallot auditing system.
5. We report unofficial results on Election Night. (Mail ballots received thus far and Early Voting ballots are the first reported.)
6. We securely store ballots for audits and recounts.

** If your signature on your Vote-by-Mail ballot doesn't match your signature on your voter record, we will contact you by mail, and also by phone or email if we have that information for you. Before we can process your ballot, you must submit a Vote-by-Mail ballot Signature Cure Affidavit along with a current and valid photo and signature ID, or ID that shows your name and current residence address no later than 5:00 p.m. on the second day after Election Day.*

VOTING IN PERSON EARLY VOTING

- ▶ During Early Voting, we set up different voting sites throughout the county and you can vote in any one you choose.
- ▶ Before you head out, we recommend you visit our website to check the wait times at each voting site.
- ▶ When you arrive at the voting location we'll print your ballot for you.
- ▶ ExpressVote equipment will be used at all Early Voting locations.



Make an Appointment to Vote Early

Utilizing our Early Voting Appointment Program, you may schedule a time window to vote at an Early Voting location of your choice to avoid waiting in line. You do not need to make an appointment to vote early. Visit VotePalmBeach.gov/Voters/Early-Voting or scan this QR Code to learn more!

When Can You Vote Early?



**PRESIDENTIAL
PREFERENCE PRIMARY (PPP)**
MARCH 9 - MARCH 17, 2024
7:00 A.M. - 7:00 P.M.



PRIMARY ELECTION
AUGUST 10 - AUGUST 18, 2024
7:00 A.M. - 7:00 P.M.

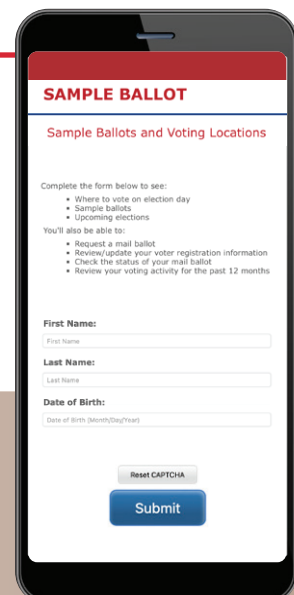


GENERAL ELECTION
OCTOBER 21 - NOVEMBER 3, 2024
7:00 A.M. - 7:00 P.M.

Sample Ballots

We mail or email personalized sample ballots before each election to voters who have not requested to receive a Vote-by-Mail ballot. Sample ballots are mailed before the election to allow voters time to make their voting decisions in advance, and bring it for reference when voting at the polls.

Read pages 12 and 20 for more on what to bring and what to expect when voting in person at a polling location.



VOTING IN PERSON ELECTION DAY

Election Day is your last chance to vote!

During countywide elections we set up hundreds of polling places for Election Day voters, but you can only vote in the polling place that is assigned to your precinct. Your ballot will be waiting for you at that polling place.

When Can You Vote On Election Day?



PRESIDENTIAL PREFERENCE PRIMARY (PPP)

MARCH 19, 2024
7:00 A.M. - 7:00 P.M.



PRIMARY ELECTION

AUGUST 20, 2024
7:00 A.M. - 7:00 P.M.



GENERAL ELECTION

NOVEMBER 5, 2024
7:00 A.M. - 7:00 P.M.

Know Your Polling Place

Finding your assigned polling location is simple and important to get right before you head to the polls on Election Day. Polling places may change for a variety of reasons. Your polling location can be found several ways:

- 1 On **VotePalmBeach.gov**, the My Status page of the website always has the most current personalized information for you.
- 2 Look at your Voter Information Card. We mail new cards out whenever your precinct or polling location changes. (Unless there is a last minute change due to an emergency.)
- 3 Call (561) 656-6200 and ask us.

HOW TO VOTE STEP BY STEP

How To Vote In Person

1 Bring current, valid identification with your photo and signature. You can use any combination of the following IDs that show picture and signature. If you forget your ID, you will be able to vote a provisional ballot. More information about provisional ballots can be found on page 21.

ACCEPTABLE PHOTO ID FOR FLORIDA VOTERS:

- ▶ Florida driver license
- ▶ Florida ID Card (issued by the DHSMV)
- ▶ U.S. Passport
- ▶ Debit or Credit Card
- ▶ Military ID
- ▶ Student ID
- ▶ Retirement Center ID
- ▶ Neighborhood Association ID
- ▶ Public Assistance ID
- ▶ Veteran Health ID (issued by VA)
- ▶ Concealed Weapon License (issued pursuant to F.S. 790.06)
- ▶ Employee ID issued by any branch, department, agency, or entity of the Federal Government, the State, a county or a municipality

2 You may bring your sample ballot for reference.

** Your Voter Information Card does not count as ID to vote. If you forget to bring ID with you, you can vote using a provisional ballot.*

3 Sign in with a poll worker who will ask for your photo/signature ID.

4 Receive your paper ballot and a privacy folder.
** You may also ask to vote using the ADA accessible ExpressVote device.*

5 Go to the voting booth and mark your ballot.

6 Review your ballot. If you made a mistake, ask for a new ballot. Otherwise, bring your ballot to the scanning machine.

7 Insert your ballot into the optical scanner, one page at a time. A poll worker will be standing by the machine to answer any questions you have and to collect your privacy folder.

8 Once your ballot has been accepted by the scanner, your votes have been cast and no changes can be made.



Did you know?

After you vote, your voter record will be updated to show that you voted, but there is no way for anyone to see who you voted for.

Every ballot is anonymous, with no name or number attached to it.

PROVISIONAL BALLOTS

What Is A Provisional Ballot?

If you do not bring ID or if there is any question about your eligibility to vote, you may vote a provisional ballot.

You'll mark your ballot just as you would normally, but instead of putting it through the scanner at the voting site, your voted ballot will go into a "provisional envelope" and be delivered to our office. If your eligibility to vote can be verified, the ballot will be counted. You'll be able to check the status of your provisional ballot on our website.

VOTING EQUIPMENT

OUR STATE-OF-THE-ART VOTING EQUIPMENT IS CERTIFIED BY FLORIDA'S SECRETARY OF STATE AND HAS BEEN USED IN PALM BEACH COUNTY SINCE 2020.



OPTICAL SCAN VOTING

State-of-the-art DS200 polling location ballot scanner and vote tabulator immediately, accurately, and securely tabulates your ballot when voting in person at the polling location so you know your vote is counted.



ACCESSIBLE VOTING

The state-of-the-art paper-based ExpressVote System uses touch-screen technology that produces a paper record for tabulation. As a marker, the ExpressVote handles the entire marking process, eliminating unclear marks and the need for interpretation of the voter's mark.

FREQUENTLY ASKED QUESTIONS

WHAT VOTING EQUIPMENT IS USED?

ES&S DS200 optical scanners and ExpressVote ballot marking devices are at all Early Voting and Election Day sites. High-speed, central count scanners are used to tabulate Vote-by-Mail ballots. All voters use paper ballots to vote.

DOES IT MATTER HOW I INSERT MY BALLOT INTO THE SCANNER?

No. You can place either end into the scanner with either side up.

DO I HAVE TO VOTE IN ALL THE RACES?

No. The ballot scanner will count your votes in the races that you marked.

WHAT IF I VOTE FOR TOO MANY CANDIDATES IN A RACE?

If you're voting in person, the ballot scanner will alert you that you have "overvoted" and allow you to request a new ballot or cast the ballot anyway. If you cast a ballot with an overvote (in person or by mail), all races except the overvoted race will be counted.

WHAT IF I DO NOT VOTE IN ANY RACES?

The scanner will alert you that the ballot is blank. You can choose to cast the blank ballot or get assistance from a poll worker.

WHAT IF I MAKE A MISTAKE ON MY BALLOT?

If you're voting by mail, call our office and let us know you need a new ballot. So long as we have not received your ballot, we will send you a new one. If you're voting in person, tell a poll worker. You can have up to three ballots, including the original. The ballot(s) with mistakes will be sealed inside a "spoiled ballot" envelope. If you make a mistake on your third ballot, the ballot cannot be corrected.

CAN I CHANGE MY BALLOT ONCE IT HAS BEEN CAST?

No. Once your ballot has been scanned and accepted by the optical scanner or your mail ballot has been received by our office, your ballot cannot be retrieved or changed. You may only cast one ballot.

CAN I WRITE IN A CANDIDATE?

We can only count votes for candidates who have submitted qualifying paperwork before the election. In races with qualified write-in candidates, your ballot will include a blank space with an oval next to it. If you fill in the oval and write in the name of a qualified write-in candidate, that vote will be counted.

IF I RECEIVE A VOTE-BY-MAIL BALLOT, CAN I CHANGE MY MIND AND VOTE IN PERSON?

Yes. In that case, your Vote-by-Mail ballot will be canceled at the polling place.

WHAT HAPPENS IF THE POWER GOES OUT OR THERE ARE TECHNICAL PROBLEMS AT A VOTING SITE?

We have backup equipment, printed check-in registers, and an auxiliary ballot box to keep everything going with minimal interruption. If a ballot scanner stops working, you can wait for a replacement scanner to cast your ballot, or put your ballot in the auxiliary ballot box and it will be scanned after the polls close.

WHAT HAPPENS TO MY BALLOT AFTER I'VE VOTED?

Paper ballots are secured and available for recounts or audits. We store ballots for 22 months.

HOW DO I KNOW THAT MY BALLOT WILL BE COUNTED?

If you Vote-by-Mail, you can track your ballot on our website to see when your voted ballot has been received and counted. When you vote in person, the screen on the scanner indicates that your ballot has been accepted.

WHAT CHECKS AND BALANCES ENSURE AN ACCURATE VOTE COUNT?

To make sure every ballot is counted, we have systematic procedures and redundancies in place to track how many ballots are issued, returned, and counted. To make sure every ballot is counted accurately, our ballot scanners are tested repeatedly and publicly before every election. Afterward, we run a post-election audit using a separate system to re-tabulate the ballots and confirm the accuracy of our results. Finally, to ensure accountability, election results and voter history become public record that anyone can check.

BE AN ELECTION WORKER

You can make a difference in our community by joining our team of election workers. It takes between 4,000-5,000 election workers to staff our polling places on Election Day. Our election workers are engaged citizens from all walks of life who are committed to serving the voters of Palm Beach County. All election workers are trained for their jobs and are paid for their work on Election Day.



YOU CAN MAKE A DIFFERENCE.

APPLY TODAY!

ADOPT-A- PRECINCT

The Adopt-A-Precinct (AAP) program is a community partnership for 501(c)(3) organizations, associations, and charitable institutions. Through the AAP program, local organizations can take part in the elections process by “adopting” a precinct, providing the staffing of civic-minded individuals who will conduct and maintain the integrity of the voting process. The program, while serving as an opportunity to raise money for the organization, is also a great team-building experience for staff and volunteers.

Visit VotePalmBeach.gov to learn more about our programs and apply to be a proud Palm Beach County Election Worker!

ELECTIONS TEAM OUTREACH

We are committed to engaging with our local community by providing opportunities to register and learn about voting. You will see our staff at events throughout Palm Beach County. If you are hosting an event, we may be available to attend and provide voter registration and education services. Contact our outreach department at (561) 656-6200 to learn more.

▶ **REQUEST A SPEAKER**

The Supervisor of Elections or a representative may be available to speak at a class, club, organization, and to various groups throughout Palm Beach County.

▶ **VOTER REGISTRATION TABLE**

We can set up a voter registration table to assist voters with registering to vote.

▶ **USE VOTING EQUIPMENT**

Organizations and schools can request our office to conduct their homeowners association or other local election.

▶ **VOTER EDUCATION PROGRAMS AT SCHOOLS AND UNIVERSITIES**

Each year we offer a voter registration and education program in each public high school and college campus in Palm Beach County to reach and educate students who are eligible to register or pre-register to vote. This includes setting up a voter registration table as well as attending campus events or forums.

▶ **VOTER REGISTRATION TRAINING WORKSHOPS**

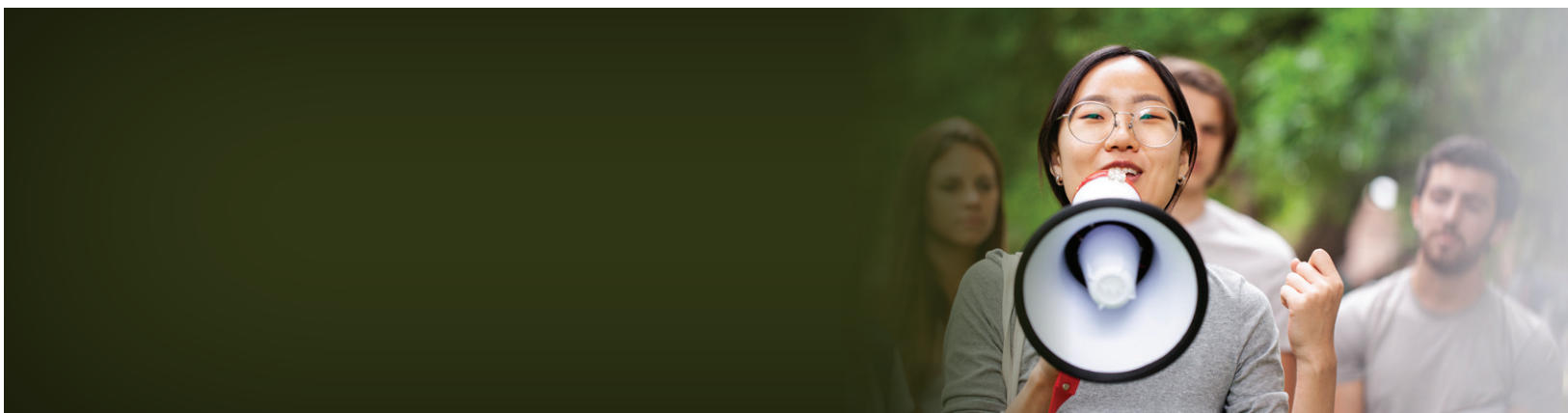
We provide training to registered Third-Party Voter Registration Organizations that are interested in sponsoring voter registration drives.

▶ **ELECTIONS EXPERIENCE TOUR**

Take a behind-the-scenes look at how elections are run in Palm Beach County. Palm Beach County residents are invited to our elections center for scheduled tours to see how elections are run from start to finish. Visit VotePalmBeach.gov to learn more.

▶ **CONNECT ONLINE**

Your Elections Team is online at www.VotePalmBeach.gov. You can also stay connected on all your favorite social media channels.



VOTER INFORMATION IS PUBLIC RECORD

In Florida, a voter's registration information and voting history are public record; however, the following information is exempt from public disclosure:

- ▶ Social Security Number
- ▶ Driver license number
- ▶ Florida identification number
- ▶ Location of voter's place of registration or voter registration update

A voter's signature may be viewed but not be copied.

If you are, or become, a participant in the Attorney General's Address Confidentiality Program for victims of domestic violence and stalking or fall within one of the statutorily designated classes of high-risk professionals, your voter registration information may be exempt from public disclosure.





VotePalmBeach.gov

Info@VotePalmBeach.gov

Phone: (561) 656-6200 | Fax: (561) 656-6287






 @VotePalmBeach

LOCATIONS



**MAIN OFFICE
AND VOTING EQUIPMENT
SERVICE CENTER**

4301 Cherry Road
West Palm Beach, FL 33409
Phone: (561) 656-6200
Fax: (561) 656-6287



**NORTH COUNTY
BRANCH OFFICE**

3188 PGA Blvd. | Room #2401
Palm Beach Gardens, FL 33410
Phone: (561) 624-6555
Fax: (561) 624-6572



**WEST COUNTY
BRANCH OFFICE**

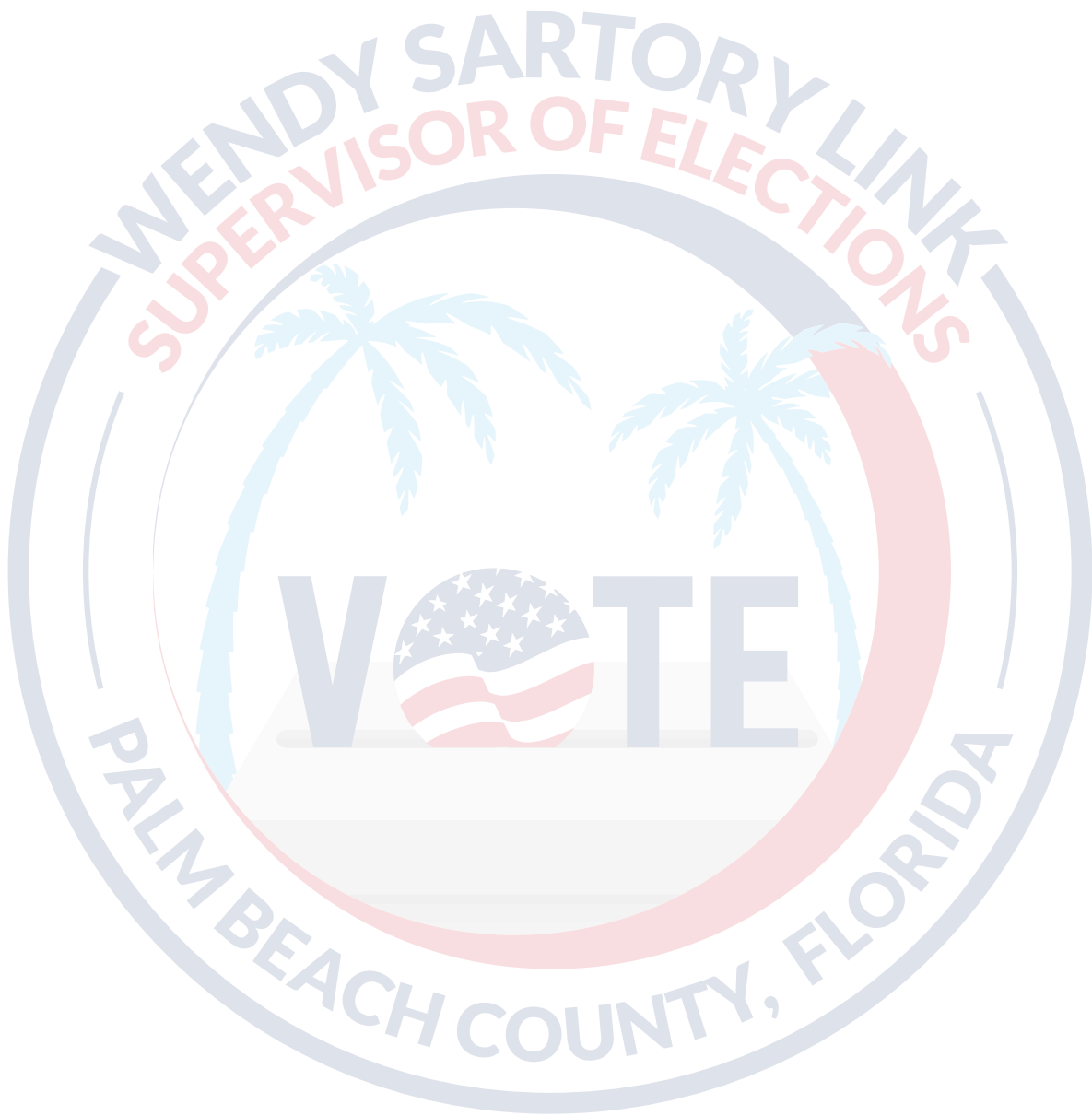
2976 State Road #15 | Second Floor
Belle Glade, FL 33430
Phone: (561) 992-1114
Fax: (561) 992-1219



**SOUTH COUNTY
BRANCH OFFICE**

345 S. Congress Avenue | Room #103
Delray Beach, FL 33445
Phone: (561) 276-1226
Fax: (561) 276-1321

PUBLIC RECORDS DISCLAIMER: Please note: Florida has a very broad public records law. Voter registration applications and other written communications to or from the Supervisor of Elections are public records and available to the public and media upon request, unless the information is subject to a specific statutory exemption. Email addresses are also public records. If you do not want your email address released in response to a public records request, please contact us by mail or phone, or visit us in person.



INTEGRITY

ACCOUNTABILITY

SERVICE



— TRANSPARENT SECURE DEMOCRACY —



Wendy Sartory Link
Palm Beach County Supervisor of Elections

     @VotePalmBeach

 561.656.6200  561.656.6287

VotePalmBeach.gov